

# Bury SEND



SEND Local Offer Bury

# LOCAL OFFER NEWSLETTER

December 2022



*Artwork created by children at Millwood Primary School*



Hello All

So often we think about sharing the big things that are happening but don't remember to share the smaller things which are equally as important to know.

So, thinking about this I wanted to update you on the news. We have got an agreement to have a dedicated Social Work post to undertake the Social Care advice and are currently in the process of recruiting to the role. This will mean that a worker will have a conversation with all new requests rather than it being a paper-based process which should feel a lot better and be so much more person-centred.

We have now updated our Education Health Care Assessment process so that will mean we will be contacting families within 3 working days of the EHCP panel to inform them as to whether it is an agreement to assess or not. Where the decision is a 'no to assessment' then the case worker will phone the parent/carer directly to have a conversation why and explain the panel's decision.

On the 7<sup>th</sup> December we resumed our Multi Agency Quality Assurance meeting. This is where Health, Education and Social Care leads come together to review a number of anonymised recent EHC Plans, to consider the quality of the advice and the plan itself and then make a judgment to take any learning into service development. Linked to this you may want to know that the SEND Lead, BURY2GETHER and SENDIASS meet weekly for an update meeting to support service improvement and problem solving.

**Michael Kemp - Strategic Lead for SEND and Inclusion**

**Bury Council | Children & Young People Department**

**3 Knowsley Place | Duke Street | Bury | BL9 0EJ**

**Email [M.Kemp@bury.gov.uk](mailto:M.Kemp@bury.gov.uk)**

**Phone +44 (0) 161 253 5773 Mobile 07458032991**



## Bury Child and Adolescent Mental Health Service (CAMHS) Update

Please click on the link to view the latest news update from the team:

[CAMHS Newsletter | The Bury Directory](#)

## SEND Communications and Engagement:

Please **subscribe** to the Local Offer mailing list by:

**Email:** [Kasia.Taylor@bury.gov.uk](mailto:Kasia.Taylor@bury.gov.uk)

**Tel:** 0161 253 6087

**Follow us on Twitter** [@BuryLocalOffer](#)

**Facebook:** [Bury SEND Local Offer](#)

**Bury2Gether Parent/Carer Forum:**

[www.bury2gether.co.uk/membership](http://www.bury2gether.co.uk/membership)

**Family Information Service:** [Family Information Service \(FIS\) | The Bury Directory](#)

Bury SEND Local Offer Newsletter



The poster features a central circular logo with the letters 'FIS' in a 3D style, surrounded by silhouettes of families. Below the logo, the text 'FAMILY INFORMATION SERVICE' is written in large, bold, multi-colored letters. A QR code is visible in the bottom right corner of the poster. The background is a mix of teal and purple.

**FAMILY INFORMATION SERVICE**  
BRIDGING INFORMATION TO YOU

**FAMILY INFORMATION SERVICE**

SCAN ME

A FREE SERVICE PROVIDING INFORMATION FOR PARENTS, CARERS, CHILDREN & YOUNG PEOPLE, AND THOSE WORKING WITH FAMILIES IN BURY

CHILDCARE PROVISION  
HOLIDAY INFORMATION  
MAINTAINED SCHOOLS & NURSERIES  
ACTIVITIES & SPORTS FOR THOSE AGED 0-19 YEARS

SEND LOCAL OFFER IN BURY - PROVIDING INFORMATION & SUPPORT FOR CHILDREN & YOUNG PEOPLE WITH SPECIAL EDUCATIONAL NEEDS & DISABILITIES AGED 0-25 YEARS

**COULDN'T FIND WHAT YOU ARE LOOKING FOR?**  
IF YOU NEED FURTHER INFORMATION PHONE US ON 0161 253 5941 OR E-MAIL [CHILDINFO@BURY.GOV.UK](mailto:CHILDINFO@BURY.GOV.UK)

THE BURY DIRECTORY  
[THEBURYDIRECTORY.CO.UK](http://THEBURYDIRECTORY.CO.UK)

Bury COUNCIL

### The EHC Assessment and Review Team

Following the recent change of team name from SEN Team to EHC Assessment and Review Team, the previous inbox [senteam@bury.gov.uk](mailto:senteam@bury.gov.uk) will now be updated accordingly.

From 01/01/2023, please direct all general enquiries to [ehc@bury.gov.uk](mailto:ehc@bury.gov.uk). However, the general phone number (0161 253 5969) will remain the same with our Assistant Caseworkers available on this line during working hours.

### The Inclusion Service

The Inclusion Service provides support to schools by:

- **Sensory Service** -Provide Visual and Hearing Impairment support/coaching and teaching.
- **SEMH** (Social Emotional Mental Health) Team and the Cognition and Learning/Communication Difficulties Team provide consultation, advice, mentoring, coaching to schools and training.
- **Inclusion Leads** provide outreach support, co-ordination and problem solving.
- **The Helpline via email.**

### **Helplines within the Inclusion Services (SEMH Outreach/Additional Needs Team)**

The purpose of the helplines is to give general advice around SEN issues that arise in school. Helpline consultations will be short, solution focused conversations to support the SENCO with next steps that school may take. The helplines will be accessed via email. To ensure a timely response, SENCOs are asked to use “**Inclusion Services Helpline Query**” as the subject header.

**Primary SEMH** queries to be sent to: [primarysemhteam@bury.gov.uk](mailto:primarysemhteam@bury.gov.uk)

**Secondary SEMH** queries to be sent to: [n.bell@bury.gov.uk](mailto:n.bell@bury.gov.uk)

**Cognition and learning/communication difficulties** queries to be sent to: [additionalneedsteam@bury.gov.uk](mailto:additionalneedsteam@bury.gov.uk)



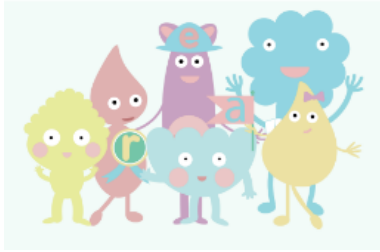
Hello and wishing you all a Merry Christmas. I wanted to give you an update for the Sensory pilot. We started Phase 2 on 1st July 2022. Since July, there has been 111 referrals received! The graduated changes in the pathway mean more families are being supported pre-diagnosis as well as having access to advice and guidance and assessment. Referrals are via the Community Paediatricians, CAMHS and the SEND Health Visitors who can refer to service directly which saves on waiting times. This is a positive step for Bury and the pilot will be reviewed again in 12 months' time to ensure effectiveness of service as we are quality assuring the provision.

Feedback from the pilot shows 91.67% of respondents felt they had a better understanding of sensory challenges and how they affect daily life and 95.83% would recommend the sensory processing training.

**Jo McMaster - Designated Clinical Officer for SEND**

**Email: [joanne.mcmaster2@nhs.net](mailto:joanne.mcmaster2@nhs.net)**





MyHappyMind is a fantastic pilot running in many of our schools, including our special schools in Bury. Feedback has been fantastic, and we have secured additional joint funding, and are progressing with phase 3 of the programme, which will see this being available in more schools. The programme comprises of a PHSE curriculum and resources for children. Wellbeing resources for staff and a parents App, so that parents can take part and understand what their child has learned so that they can continue to support at home.

Laura is the creator of myHappyMind, she has a Pod cast with lots of information including facing tricky times. Please see the link here.

[Podcast - myHappyMind](#)

If you want to know more about the school programme have a look here

[School Programme - myHappyMind](#)



Over the past 4 months, Spectrum Gaming have been working together with over 350 autistic young people, 150 autistic adults, 600 parents and 80 professionals to create a guide to autism and trauma:

**Click on the link:**

<https://www.barrierstoeducation.co.uk/trauma>



Together Trust have some useful information for tips of sleep. These free downloads can be accessed here: [Resources, information and advice | Together Trust](#)

We have recently uploaded a free 45-minute webinar on sleep basics and can be accessed by visiting the Sleep Tight Rochdale page of our website: [Sleep Tight Rochdale | Together Trust](#)

We have also just launched a self-funded service in response to some families contacting us to ask if they can self-fund sleep support.

**TOGETHER TRUST**  
Registered charity number 209782

**Monthly drop in and chat coffee mornings**  
with our Therapy and Specialist Support team

**2022**  
Tuesday 18 October  
Wednesday 23 November  
Friday 16 December

**2023**  
Tuesday 14 February  
Tuesday 14 March  
Wednesday 3 May  
Monday 10 July

🕒 10am - 12pm

📍 Together Trust Centre,  
Schools Hill, Cheadle,  
Cheshire SK8 1JE

**Professional therapists are available to chat to, including:**

- Speech and Language Therapists
- Occupational Therapists
- Sleep Practitioners
- Positive Behaviour Practitioners
- Education and Clinical Psychologists

Parents and carers have the opportunity to meet others in a similar situation and our team can provide information and support in areas you might be experiencing difficulty in.

We also provide a **comprehensive Autism specific library** and many other resources which parents and carers are welcome to access.

0161 286 4201    [togethertrust.org.uk](https://togethertrust.org.uk)

## Children's Community Nursing Team – Bury

Base: Radcliffe Primary Care Centre, Church Street West, Radcliffe, M26 2SP

Contact Number: 0161 724 2137

Service Hours – 7-day week service 8 AM – 8 PM

[Children's Community Nursing Team: Northern Care Alliance](#)

The Children's Team are registered Children's Nurses who have both hospital and community experience, the team structure comprises of a Team Lead, Paediatric Nurse Practitioner, Complex Needs Nurse, Nurses that care for Children with Chronic and Acute conditions, a Health Care Support Worker, and an Administrator

We cover the whole borough of Bury to provide nursing care and health education support for Children & Young People aged 0 -18 years Of age and 19 years if complex, in full time education or under a Paediatrician

The Community Nursing Team care for Children and Young People who may require:

Intravenous medication

Injections

Wound Care review

Naso- Gastric tube and Gastrostomy care

Review of Respiratory conditions

Eczema support

Constipation support

Support with Epilepsy

Complex Health Care Needs support

Oncology support

Palliative and End of Life Care support

Complex Needs Nurse works closely with the school Nursing Team at the specialist schools in Bury.

Involved in Education Health care plans and Children and Young Persons Advance care planning,

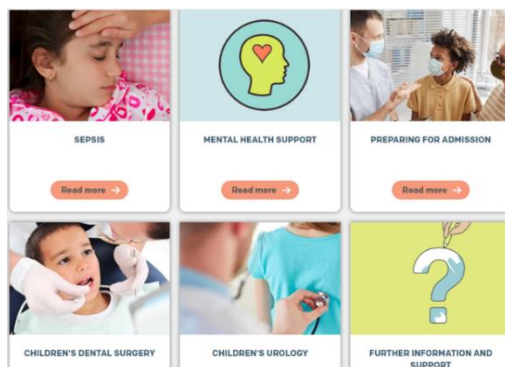
Liaison with local authority Disability team (social care) and Continuing Health Care, Children's

Hospices and Community Paediatricians, other members of the MDT – therapies such as

Physiotherapy, OT, SALT, Community Dieticians

## Children who are waiting for surgery

The information on this page is designed to support children, young people, their parents and carers whilst they are waiting for hospital treatment. You will find information on what you can do to help prepare your child for surgery, how to look after their physical and mental health and what to do if you need any extra support: Click on the link for more information <https://whileyouwait.org.uk/childrens-surgery/>



## Paediatric Physiotherapy Department



On Friday 18<sup>th</sup> November 2022, the service completed face to face interviews for the recruitment of our Band 4 Physiotherapy assistant. The panel consisted of two Senior Physiotherapist and Cathrine.

Cathrine is a 17 year old young lady and is a previous patient with the Bury Paediatric Physiotherapy service. She is currently attending college studying 'Travel and Tourism' with the hope of specialising in supporting people with Physical Disabilities.

We approached Cathrine to join our interview panel as we felt it would be beneficial to have support from a previous service user. She was really keen to be involved. Cathrine really wanted to help represent young adults and patients with physical disabilities.

Cathrine wrote two excellent candidate questions which were used in the interview. These questions really captured our trust values around being patient centred and open/honest.

Throughout the day Cathrine showed a high level of professionalism and an excellent understanding of the recruitment process. Her contributions in the interview and completing of the marking/score system really helped us select the best candidate for the job. Cathrine was able to represent what matters most to our young service users and identify this in candidate's responses. She was really good at picking up on candidates who demonstrated the ability to inspire and motivate people to achieve the best outcomes.

As a team we're really pleased that Cathrine gave her support to the Physiotherapy Team and to other services we would encourage seeking advice and support from service users to help with recruitment.

### **Lyndsey Davenport**

#### **Paediatric Physiotherapy Team Leader**

Paediatric Physiotherapy

Bury Community Services

[Bury Care Organisation](#)

Bury Living Well Centre

Morely St

Bury

BL9 9JQ

Tel: 0161 2060657

Website: <https://www.northerncarealliance.nhs.uk/paediatric-physiotherapy-bury>



## How can I help my child with Special Educational Needs cope with Christmas?

A few personal top tips from a mum with a SEND child who is also a school nurse.

- Keep to your normal routine as much as possible.
- Christmas can be overwhelming for children with SEND, particularly those with sensory needs. Consider where you are going if participating in Christmas events. Are the lights going to be too bright/flashing? Is it going to be noisy? Will there be music? Will it be crowded?
- If you are going to a Christmas party or event, take a bag containing things that are familiar and are a comfort to your child, in case they are needed.
- Receiving lots of presents, and being expected to open them, can be overwhelming. Consider giving them over a few days.
- Remember it's ok to say no to Christmas gatherings, do what is right for you and your child.
- Don't compare with other families, don't place expectations on your child (or yourself!) and just enjoy the moment.

More top tips can be read on the Local Offer: [Ideas for an Autism Friendly Christmas | The Bury Directory](#)



Hoyle Nursery School has resourced provision for 12 children with identified Social, Communication difficulties. Places are either full time or part time to cater for individual needs. We offer a bespoke curriculum within a specialist Early Years Environment supported by staff who have the additional expertise of supporting our youngest learners.



We have recently become a Trauma Informed School and follow the My Happy Minds Programme and Think Equal, we use PECS, Objects of Reference, WellComm, Sing and Sign, Makaton, offer bespoke Sensory programmes, PACT (Paediatric Autism Communication Therapy), Attention Autism and Intensive Interaction. We have weekly sessions with KidsRock and the 'Wow Approach' and support our children with transitions to Primary School.

We support our parents and work closely with outside agencies such as SALT, Educational Psychologist and Health Professionals to ensure that the appropriate support is in place. This includes joint planning and feedback meetings and support with the request for an EHC assessment if deemed necessary

to support the child's next steps.

If you would like to arrange a visit to the Nursery please email or phone to make an appointment. Tel: 0161 761 6822 or email [Hoyle@bury.gov.uk](mailto:Hoyle@bury.gov.uk) Website: [Hoyle Nursery School - Home](http://HoyleNurserySchool-Home)



0161 850 3330



07572 171264



[services@jsense.org.uk](mailto:services@jsense.org.uk)

[www.jsense.org.uk](http://www.jsense.org.uk)



Suite 5 The Belmont, 89 Middleton Road, Manchester, M8 4JY

JSENSE is a Registered Charity, registered charity number 1151197



The information contained in this communication is intended solely for the use of the individual or entity to whom it is addressed and others authorised to receive it. It may contain confidential or legally privileged information. If you are not the intended recipient you are hereby notified that any disclosure, copying, distribution or taking any action in reliance on the contents of this information is strictly prohibited and may be unlawful. If you have received this communication in error, please notify us.



# What's on...



## WHAT'S ON AT BURY SEND HUB



### Early Years Sensory Play Session

Bee Inclusive, with funding from the 'Let's Do It' Community Health Grant, are hosting monthly sensory play sessions for children with special educational needs and disabilities (SEND), aged 0-5 years and their parent/carers.

**Date: Wed 25th Jan**

**Sensory Play: 10.30- 11.15 am**

**Coffee and chat: 11.15 am - 12.30 pm**

**Venue: Bury SEND Hub (home of Bee Inclusive)  
Westminster Ave, Radcliffe, M26 3WD**

There will be different sensory activities available at each session.

A parent/carer must stay and supervise their child at all times.

Kelly Judd (Senior Portage Worker) and Laura Trevor (SEND Health Visitor) will be attending the sessions.

**Booking is essential.**

To be considered for a place, you must meet the following criteria :

Child attending is 0-5 years, has SEND and lives in (or accesses) services in Bury.

If you meet these requirements, please visit:

[www.beeinclusive.co.uk/events-1](http://www.beeinclusive.co.uk/events-1) to secure a place.

[hello@beeinclusive.co.uk](mailto:hello@beeinclusive.co.uk) [www.facebook.com/beeinclusiveuk](http://www.facebook.com/beeinclusiveuk) [www.instagram.com/bee\\_inclusive](https://www.instagram.com/bee_inclusive) [www.twitter.com/bee\\_inclusive](https://www.twitter.com/bee_inclusive)

**BURY** LET'S DO IT! Local Enterprise Together Strengths [theburydirectory.co.uk/letslivewell](http://theburydirectory.co.uk/letslivewell) #LetsLiveWell #LetsDolt

- 15 NOV 11 AM - 12 PM** BURY2GETHER: CARE AND CONVO. PARENT/CARER DROP-IN COFFEE MORNING WITH ACCESS TO THE WELLBEING LIBRARY. NO NEED TO BOOK.
- 15 NOV 12.30 - 1.15 PM** BEE INCLUSIVE: EARLY YEARS (0-5) SEND SENSORY SESSION WITH SENSORY BEARS, SENIOR PORTAGE WORKER AND SEND HEALTH VISITOR. BOOKING ESSENTIAL: [WWW.BEEINCLUSIVE.CO.UK/EVENTS-1](http://WWW.BEEINCLUSIVE.CO.UK/EVENTS-1).
- 16 NOV 4.30 - 5.30 PM** HAPPY SIGNS CHOIR: A SINGING AND SIGNING CHOIR FOR PEOPLE WITH SEND AND THEIR FAMILIES. FOR MORE INFORMATION/TO BOOK PLEASE CONTACT EMMA: [HAPPYSIGNSCIC@YAHOO.COM](mailto:HAPPYSIGNSCIC@YAHOO.COM)
- 23 NOV 4.30PM - 5.30 PM** HAPPY SIGNS CHOIR: A SINGING AND SIGNING CHOIR FOR PEOPLE WITH SEND AND THEIR FAMILIES. FOR MORE INFORMATION/TO BOOK PLEASE CONTACT EMMA: [HAPPYSIGNSCIC@YAHOO.COM](mailto:HAPPYSIGNSCIC@YAHOO.COM)
- 30 NOV 4.30PM - 5.30 PM** HAPPY SIGNS CHOIR: A SINGING AND SIGNING CHOIR FOR PEOPLE WITH SEND AND THEIR FAMILIES. FOR MORE INFORMATION/TO BOOK PLEASE CONTACT EMMA: [HAPPYSIGNSCIC@YAHOO.COM](mailto:HAPPYSIGNSCIC@YAHOO.COM)
- 7 DEC 11 AM - 12 PM** BURY2GETHER: CARE AND CONVO. PARENT/CARER DROP-IN COFFEE MORNING WITH ACCESS TO THE WELLBEING LIBRARY. TO BOOK PLEASE EMAIL: [BURY2GETHER@GMAIL.COM](mailto:BURY2GETHER@GMAIL.COM)
- 7 DEC 4.30 - 5.30 PM** HAPPY SIGNS CHOIR: A SINGING AND SIGNING CHOIR FOR PEOPLE WITH SEND AND THEIR FAMILIES. FOR MORE INFORMATION/TO BOOK PLEASE CONTACT EMMA: [HAPPYSIGNSCIC@YAHOO.COM](mailto:HAPPYSIGNSCIC@YAHOO.COM)
- 13 DEC 7.00 - 8.00 PM** BURY2GETHER: MICHAEL KEMP AND JANE CASE SEND PARENT ENGAGEMENT MEETING. OPEN TO ALL PARENT/CARERS. TO BOOK PLEASE EMAIL: [BURY2GETHER@GMAIL.COM](mailto:BURY2GETHER@GMAIL.COM)
- 14 DEC 12.30 - 1.15 PM** BEE INCLUSIVE: EARLY YEARS (0-5) SEND SENSORY SESSION WITH SENSORY BEARS, SENIOR PORTAGE WORKER AND SEND HEALTH VISITOR. BOOKING ESSENTIAL: [WWW.BEEINCLUSIVE.CO.UK/EVENTS-1](http://WWW.BEEINCLUSIVE.CO.UK/EVENTS-1)
- 14 DEC 4.30 PM - 5.30 PM** HAPPY SIGNS CHOIR: A SINGING AND SIGNING CHOIR FOR PEOPLE WITH SEND AND THEIR FAMILIES. FOR MORE INFORMATION/TO BOOK PLEASE CONTACT EMMA: [HAPPYSIGNSCIC@YAHOO.COM](mailto:HAPPYSIGNSCIC@YAHOO.COM)
- 17 DEC 1.30 PM - 3.30 PM** BEE INCLUSIVE ACCESSIBLE SANTA VISITS: SANTA'S GROTTO FOR CHILDREN AND YOUNG PEOPLE WHO HAVE SEND AND THEIR FAMILIES. MUST BOOK AT: [WWW.BEEINCLUSIVE.CO.UK/EVENTS-1](http://WWW.BEEINCLUSIVE.CO.UK/EVENTS-1)

The Bury SEND Hub, Westminster Avenue, Radcliffe, M26 3WD

[www.bury2gether.co.uk](http://www.bury2gether.co.uk)  
[www.beeinclusive.co.uk](http://www.beeinclusive.co.uk)



**JOIN US AT THE BURY SEND HUB FOR A FESTIVE AFTERNOON!**

**MEET SANTA AND MAKE A FESTIVE CRAFT WHILST YOU WAIT IN OUR ACCESSIBLE QUEUE**

**We will also be joined by Happy Signs Choir for some festive Christmas Carols!**

Happy Signs Choir is a singing and signing group made up of children and young people who have SEND.

This event is for children and young people with SEND (Special Educational Needs and Disabilities) and their families. Time slots are available on **Saturday 17th December between 1.30-3.30pm**

To be considered for a place, please fill out the booking form on the Bee Inclusive website [beeinclusive.co.uk/events-1](http://beeinclusive.co.uk/events-1)

**Venue: The Bury SEND Hub, (Home of Bee Inclusive), Westminster Avenue, Radcliffe, M26 3WD.**

£2 per child

## Christmas Events

Join Bee Inclusive for some fun activities exclusively for children with Special Educational Needs and Disabilities (SEND). These activities are kindly funded by Magic Little Grants.

**Thu 22nd December 1-1.45 pm**  
**KidsRock Music Session** (priority booking will be given to children with complex care needs). Open to children aged 4 plus.  
**Venue: Bury SEND Hub, Westminster Ave, Radcliffe, M26 3WD.**

**Sat 31st December 1-2 pm**  
**Grip and Go Climbing Wall Session** (Age 4+) \* Please note, although the climbing area has been exclusively hired by Bee Inclusive, this session will run at full capacity.  
**Venue: Grip and Go, Adrenaline, Helmshore Road, Rossendale BB4 4DN.**

A parent/carer must stay and supervise their child during ALL activities.

**Booking is essential.** To be considered for a place, please complete the online application form at: [www.beeinclusive.co.uk/events-1](http://www.beeinclusive.co.uk/events-1). You will be contacted via email if we are able to offer your child a space. Siblings will be considered if there are additional spaces available.





Escape is a transition service for young adults who are looking to take the next step in life. We offer support between of 9.00am-3.30pm Monday - Thursday and 9.00am-3.00pm on Fridays.

We will support young people to engage in a range of activities and opportunities that link to our 3 key areas:-

### Social Development & Life Skills

Having the opportunity to meet new people, Holiday Club\*, make new friends and develop social skills. Activities such as bowling, cinema trips, joining other community groups, going out for lunch, playing pool, going to the pub.

Independent Living Skills Planning menus, purchasing ingredients, shopping, basic money skills, using household appliances, cleaning, making drinks, cooking and confidence building, travelling on public transport. Health & Wellbeing Healthy eating, using the gym, swimming, Wheels for All, indoor/outdoor sports. Rebound Therapy, relaxation, Healthy Minds.

### Moving on...

At the end of their time with us, Escape will support individuals and their families to make informed decisions about the longer-term support options and pathways into adulthood that are right for them.

### Eligibility

The young adult must have a mild to moderate learning and/or physical disabilities. Access to the service requires a personal budget or self-funding.

If you are interested in a place or you would like further information, please contact Julie Pierce

email [julie.pierce@personasupport.org](mailto:julie.pierce@personasupport.org) Mobile 07747 457 303

or Laura Faulkner email [laura.faulkner@personasupport.org](mailto:laura.faulkner@personasupport.org)

telephone 0161 253 5100

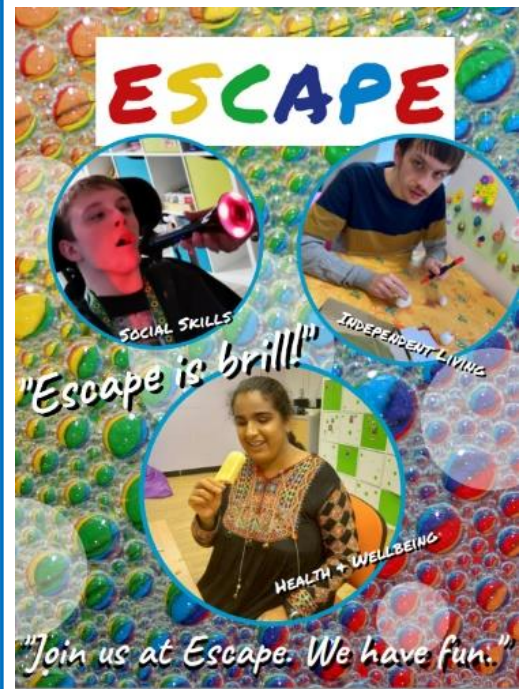
### Support with funding

We can support applications for a personalised budget from Bury Council to help fund a place.

A social worker will carry out an assessment to determine how much financial support you are eligible for. If you do not have a social worker then you can contact Bury Council on:

Telephone: 0161 253 5151

Online: [www.bury.gov.uk/adults](http://www.bury.gov.uk/adults)



**You asked us and this is what we said at the last SEND Parent Carer Engagement evening.**



**How will Bury SEND team ensure that the Children and Family Assessment is followed, and my son gets the correct provision, to support his needs during Y6/7 transition? Does he have to fail in mainstream before he would be considered for specialist provision?**

No child should have to fail because of an assessment. It should be about need which is identified early on because that gives us the greatest opportunity. We are working on re-organising the Inclusion Service and asking teaching staff - with the agreement of the Unions- to work over the summer holidays to ensure an effective transition is carried out, starting from the Easter period. We will also be asking parents with lived experiences to join us in writing a Transition Policy.

**Why has no one from the SEND team attended any of the EHCP reviews that have been held recently for the pupils at the independent school when they have advised that this team are now fully staffed?**

We realise we have a backlog of EHCPs that need reviewing which is why we have three plan writers working on it with a bid for another caseworker to work on Out of Borough placements. The team will be restructured into two with caseworkers working on new cases and the plan writers working on annual reviews, with us also looking at how the Inclusion Service can support. So unfortunately, at the moment the Team is being pulled in to doing new casework.

**Could you explain why the council are reluctant to place children at the independent special school and have indicated that pupils ready for high school will be moved to Elms Bank due to the cost of the places?**

It isn't about cost; it is about the right need for the child which is what is presented to panel. Finding the best provision for the child whether it be external or internal provision. The process now is to go through the NW Framework so when a specialist provision is needed, we consider all the points and obviously the parental preference feeds into it too.

**Is anything being done to support parents of children who move from mainstream to specialist provision? We were not asked about transport so have been handling this ourselves but understand we can claim transport costs or indeed apply for transport?**

We are working with our schools around the information what a parent might need for entering that school to ensure the child is aware of the layout of the school using visual pictures, walking through the process of the school life or virtual life if appropriate. We are also ensuring that SENCOs are passing on records from Primary Schools to Secondary. We are looking at how the EHC plan itself can become the referral form to the Transport Service, so it takes it away from the parents to arrange. We also need to be working with our schools around the information and what the options are.

**What work is being done to reduce the waiting times for diagnosis of Autism and ADHD - we've just been waiting 18months for an ADHD test and now waiting again for diagnosis?**

In December and January there are two focus weeks whereby CAMHS are having a focus week on assessments. The neurodevelopmental team are also having a week also to focus on their assessments to reduce the waiting times.

**My child has been on the waiting list for Portage for over 12 months - what is being done about this?**

We are currently looking at funding, to increase resources to Portage as it is very much high on our agenda to get the outcomes for children within the Early Years provision better.

**My son has his first CAHMS appointment 4th Dec, what should happen at this appointment?**

The first appointment is for information gathering to ensure you are getting the right help and support and that they are addressing the needs that you identify. If you have a one page profile or some form of information, make sure you take it to the session and forward it to the team before your appointment so they have got that information beforehand. Getting the information beforehand can help support with any reasonable adjustments that might need to be made at the appointment.

One page profiles can be found within the Inclusion Service on the Local Offer or alternatively BURY2GETHER will upload some templates on their website for parents to download.

**How does the banding work for resource and specialist provisions in schools as it is not stated explicitly on the EHCP and as it isn't can it be shared with parents?**

As a Local Authority and as do other LA's we commit to funding each of those places of up to the value of £10,000 whether or not there is a child in the school so that there is provision for the teaching and the TA staff. Once the child arrives there is an additional allocation of funding depending which resource provision it is as some resource provisions get more than others because of the complexity and need of each case.

## Can you give us an idea of the current waiting times for CAMHS Mental Health Support and the assessment timelines for the ASC and ADHD?

For ASC and ADHD, the current wait for an initial assessment from point of referral is approximately 24 months. For Core CAMHS, waiting time is around 10 months. The teams are working to address these waiting times with assessment focus weeks planned across December and January.

The Neuro team consists of a Team Leader and two workers, this month they have welcomed a new Speech and Language therapist to the team as part of the neuro work, we have been progressing. This will provide much needed capacity and new skills to the team.

As detailed, we are looking at many ways to support families whilst they wait, recognising that this was one of the key areas raised when we spoke to parents on the pathway. Also, linking with the GM Autism Hub workstream and we will be leading on getting The Advice and Guidance document for parents established for GM (Bury). Information regarding the pathways for ADHD and ASC can be found on the Local Offer: **CAMHS (previously known as Healthy Young Minds) | The Bury Directory**

## How will Hive EPR help families in Bury to join up Health and Care Services in the community and hospital based professionals? Can this system be accessible to all professionals including parents to reduce the need for parents and CYP repeating their stories?

The Hive electronic patient record is currently only at Manchester University Foundation Trust, it hasn't reached Pennine Trust yet. They are looking at what they can do and will be taking the learning from them. More information to follow.



### Parent Carer Engagement Evening

Our next Parent Carer Engagement evening will be face to face on

**13th December at 7.00pm,  
The SEND Hub- Westminster Avenue, Radcliffe  
M26 3WD.**

If you would like to join us and ask your SEND questions to Michael Kemp (Strategic Lead for SEND and Inclusion) then please email [bury2gether@gmail.com](mailto:bury2gether@gmail.com) to confirm your attendance.